

A4 316 Equivalent Corrosion Resistance

0-1km

Hilti Corrosion handbook / DFTM

$\leq 0,5 \text{ mm} / 0,02''$
 $\geq 8 \text{ mm} / 0,32''$
 $\leq 0,5 \text{ mm} / 0,02''$

Use with					
X-BT-MR0 W10/15 SN 8	SF BT 22-A SF BT 18-A	DX 351-BT	X-BT 1/4" - 20Nm / 14,8 ft lb	Flange Nut W10	S-NS 9/16 C 95/3 3/4"

1

2

SF BT 22-A
SF BT 18-A

3

4

5

6

7a

DX 351 BT

7b

8

X-BT-MR0

9

$\leq 200 \text{ N}$

2x

10a

Max. X-BT: 26,8 mm

10b

Min. X-BT: 25,7 mm

11

2-15 mm
5/64" - 19/32"

13-18 mm
1/2" - 3/4"

12A

X-BT 1/4" 20Nm / 14.8 lb-ft

12B

S-NS 9/16 C 95/3 3/4" $T_{fast} = 16-20 \text{ Nm}$

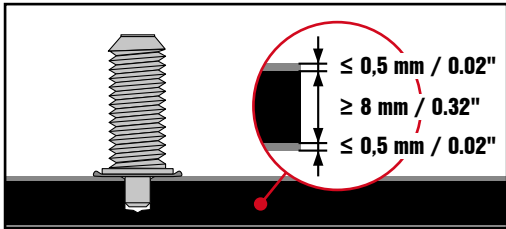
SF 14-A	3	13
SF 10W/8M-A22	4	11
SFC 14/22-A	2	11
SF 6-A22	1!	1!

13

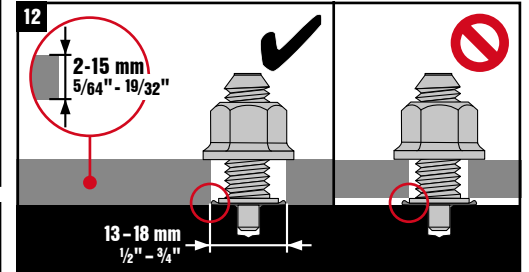
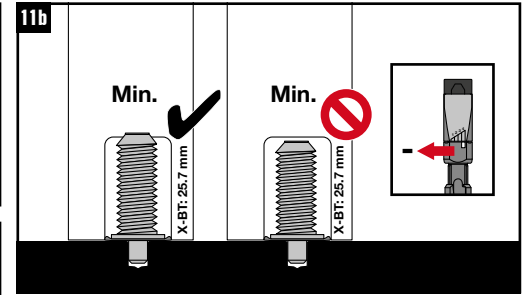
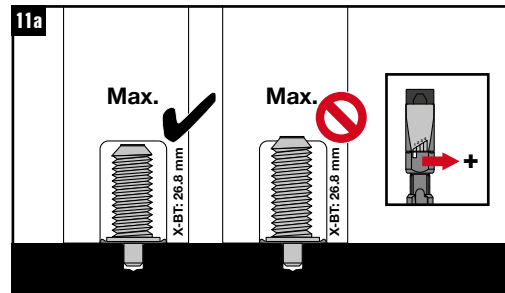
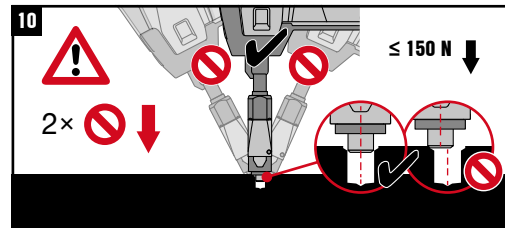
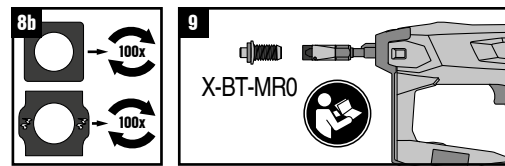
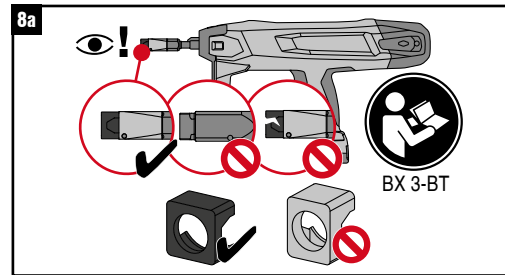
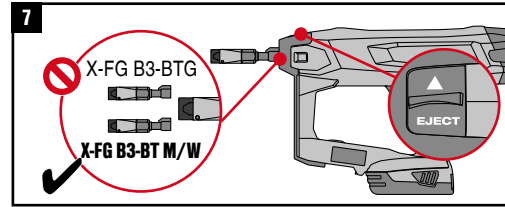
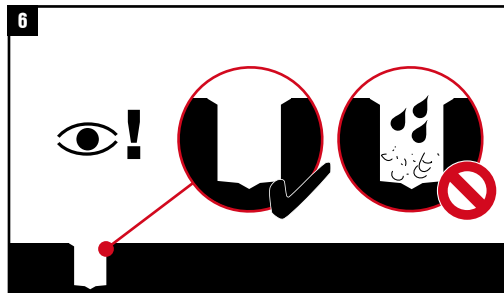
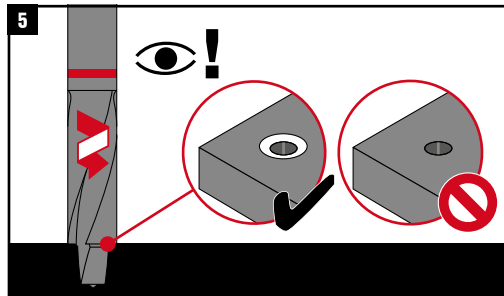
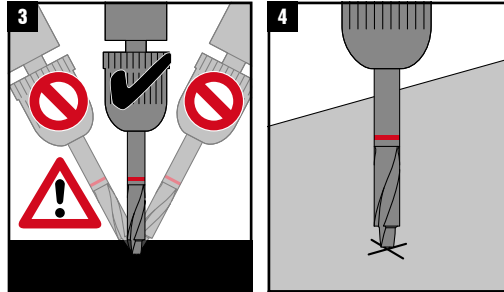
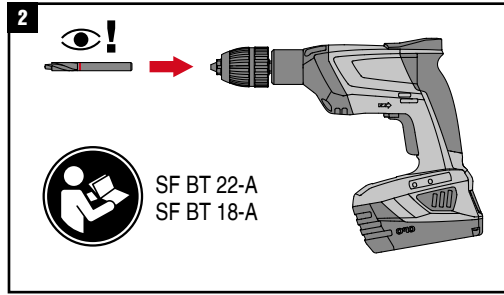
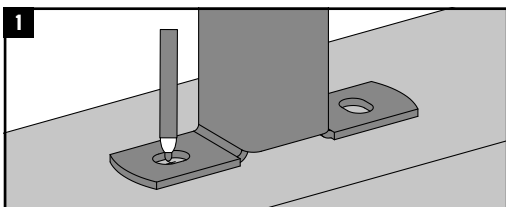
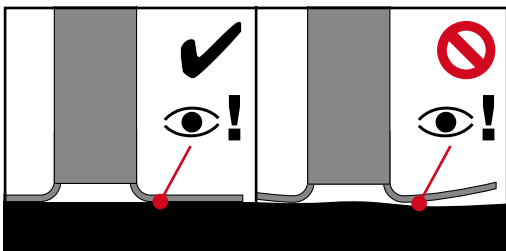
A4 316 Equivalent Corrosion Resistance

0-1km

Hilti Corrosion handbook / DFTM



Use with					
X-BT-MR0 W10/15 SN 8	SF BT 22-A SF BT 18-A	DX 3-BT	X-BT 1/4" - 20Nm / 14,8 ft lb	Flange Nut W10	S-NS 9/16 C 95/3 3/4"



X-BT 1/4" 20Nm / 14.8 lb-ft

1

2

S-NS 9/16 C 95/3 3/4"

T_{fast} = 16-20 Nm

SF 14-A	3	13
SF 10W/ 8M-A22	4	11
SFC 14/22-A	2	11
SF 6-A22	1!	1!

