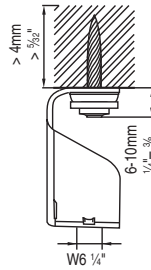
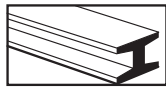


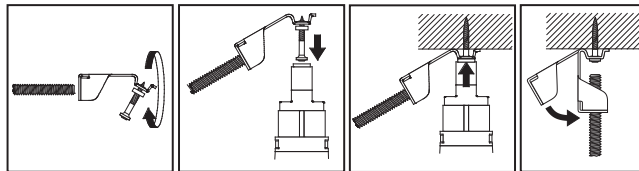
# X-HS W6 U19 P8 S15

# 386216



für/for/pour-  
DX 460 F8  
DX 351 F8  
DX 36

387203



Suitable for indoor use in other than wet locations.  
Cat. No. X-HS W6 U19 P8 S15 installed in 1/4 in. steel plate is suitable for support of maximum 2 inch Trade Size EMT, RMC and IMC and 3 inch Trade Size Rigid PVC conduit on maximum 10 ft. spacing.

